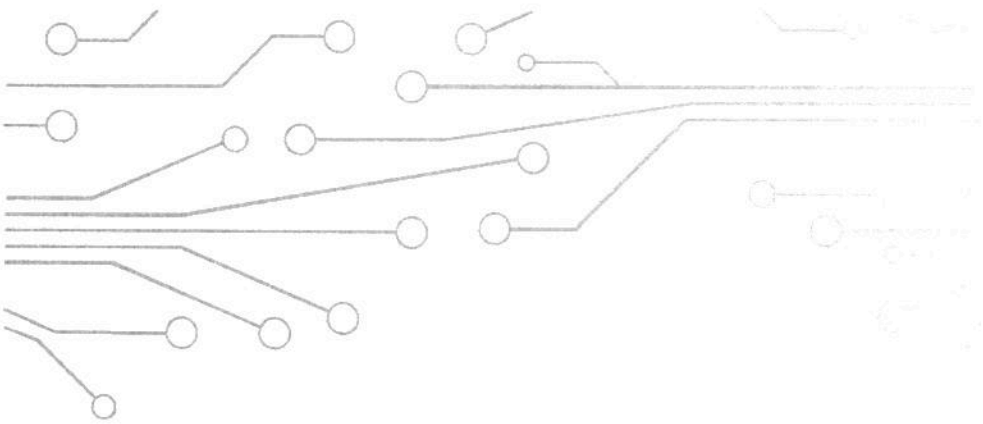




STRIVE TO SUCCEED

LAERSKOOL FLEUR PRIMARY SCHOOL

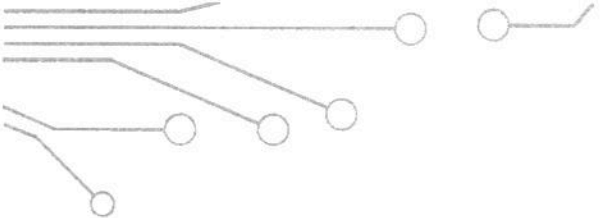
PARENT INDUCTION MEETING



WELCOME

VISION:

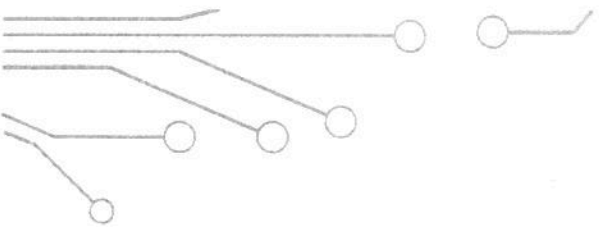
We at Fleur Primary School strive to empower, nurture and develop the full potential of learners through the delivery of an holistic education, to enable learners to become responsible citizens of South Africa.



MISSION:

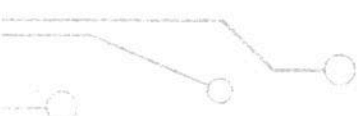
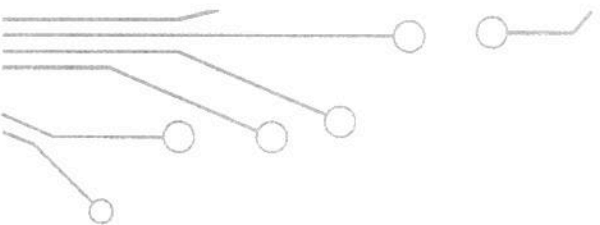
Fleur Primary School's vision will be achieved through:

- ✓ Appointing a team of highly skilled, qualified professionals.
- ✓ Ensuring excellence in teaching and learning.
- ✓ Promoting an attitude of tolerance, respect and trust amongst staff and learners.
- ✓ Developing a strong, moral code and social responsibility amongst staff and learners.
- ✓ Equipping learners to thrive in a technological world.



DISCIPLINE

- Please set a good example for your children.
- Enforce good values now, so that our society will benefit in the future.
- Discipline, good manners, dress code, road safety, etc. all begin at home.
- The school is an educational institution – discipline goes hand in hand with education



UNIFORM

Clothing MUST be clearly marked with the child's name

BOYS

SUMMER

**White short sleeve shirt with school tie
(with iron-on school badge)**

Dark grey shorts

Long grey socks

Black school shoes

Navy blue Drimac

PE CLOTHES

**Plain white t-shirt with school badge and navy shorts with plain
white/or plain black takkies and white socks**

GIRLS

SUMMER

**White short sleeve shirt with school tie
(with iron-on school badge)**

Dark grey knee length skirt

Short grey socks

Black school shoes

Navy blue Drimac

Black tights under skirt(not visible)

PE CLOTHES

**Plain white t-shirt with school badge and navy shorts with plain
white/or plain black takkies and white socks**

BOYS

WINTER

**White long sleeve shirt with school tie
(with iron-on school badge)**

Dark grey long pants

Long grey socks

Black school shoes

Navy blue pullover/plain navy blue jersey

Navy blue drimac

GIRLS

WINTER

**White long sleeve shirt with school tie
(with iron-on school badge)**

Dark grey knee length skirt or dark grey pants
Long grey socks and/or dark grey stockings

Black school shoes

Navy blue pullover/plain navy blue jersey

Black tights under skirt(not visible)

Navy blue drimac



MARKING OF BELONGINGS

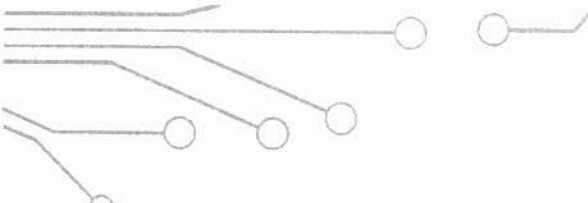
It is of utmost importance that all clothing, lunch boxes, stationery and school cases are marked clearly.

NEWSLETTERS

Please take time to read the newsletters and sign the tear-off slip that is to be handed to the class teacher.

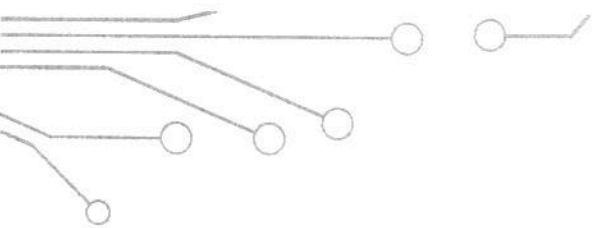
BIRTHDAYS

Learners may wear civvies on their special day and parents are allowed to send sealed party packs to school. Please make sure of the numbers of learners in the class. (All items in the party packs must be sealed and from the shop.) No cakes or cupcakes will be allowed.



PARENTAL INVOLVEMENT

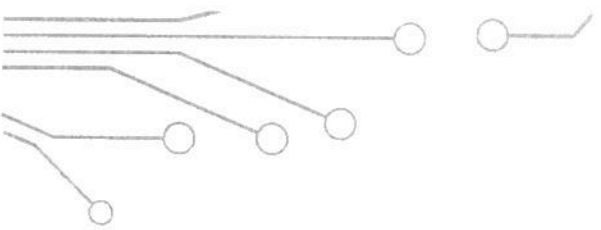
For the well-being of your child, it is of utmost importance that there must be regular contact between the parent, class teacher and the school. Always be interested. Ask your child about his/her activities and check homework. Please spend time reading with your child. Reading is a very important skill for them to master. Please participate in all school activities. Attend meetings, awards functions, fun days etc. It is important for a child to see his/her parent interact with the school.





STATIONERY

- Learners cannot work in class without the necessary stationery/tools such as glue, ruler, pen, pencil, colour pencils.
- The items listed on the stationery list per grade must be purchased and parents are urged to ensure that learners have these in their bags every day.
- Teach your child to take care of their belongings and mark each item clearly. Including shoes, shirts and bags.



ABSENTEEISM

- Frequent absenteeism impacts negatively on learner academic performance. If learners were absent they have to enquire about the work missed and in their own time catch up. A letter on the day the learner returns after being absent is required. Frequent absenteeism will be monitored.
- If absent for 3 days or longer: a doctor's note is required.
- During formal assessment/test/exams: a medical note is compulsory – a "0" mark will be given if not handed in.
- Frequent absenteeism will be followed up – especially on Fridays/Mondays.
- Absenteeism for 10 days without notification – learner will be removed from the register – and will have to re-apply for admission.
- Communicate with the register teacher or phone the school – to convey to teacher.
- Sick learners: Do not send learners who are feeling ill to school. When children have a contagious disease like measles, mumps, etc. keep them at home.
- Learners with lice, nits must be kept at home while the infestation is treated.

MEDICATION

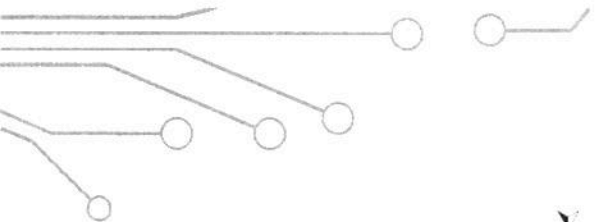
- Medication will not be administered at school except in exceptional cases.
- This is Departmental policy. We do not keep any headache pills or medication for stomach cramps or nausea at school. As it is against the safety regulations.

ALLERGIES

- Inform the class teacher.
- Send a dose of anti-histamine to the office so that it can be administered as quickly as possible.
- Include the dosage and how to use it, with a permission letter to the school to allow the school to administer the treatment.

➤ Diabetic and Asthma sufferers:

- Must have their medication at school – with clear instructions on usage.
- Inform the class teacher and front desk.
- Make sure the school has your correct contact details as well as medical aid information.



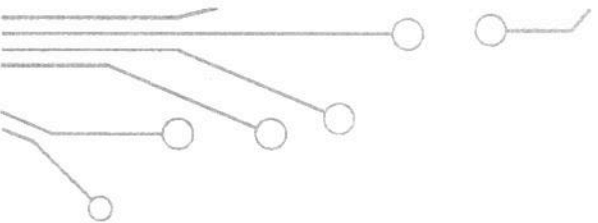
SCHOOL HOURS

Grades R – 2	: 7:30 – 13:15	FRIDAYS: 7:30-12:45
Grade 3	: 7:30 – 13:45	FRIDAYS: 7:30-12:45

We request that learners be at school on time. Late comers will be noted in the latecomers register and demerits will be issued to the learner. Please take responsibility so your child is on time for school. This is a **HUGE** problem at our school and learners miss out on valuable teaching time. **BEING PUNCTUAL IS A LIFESKILL.** Please parents, it is vitally important that you collect your child on time each day.

VISITORS

During school hours you will only be able to enter the school premises at the main gate on Hans Strijdom Avenue. Parents are not allowed into the classrooms during school hours. This arrangement is made for the safety of our children and staff. Should you wish to see a teacher you are encouraged to make an appointment as we will not withdraw a teacher from class during teaching time.



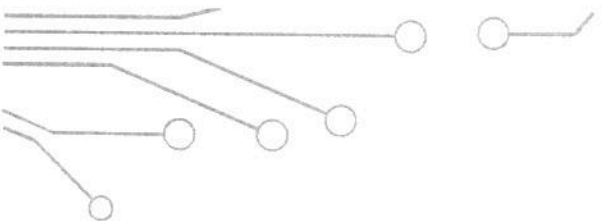
COVID SAFETY PROTOCOLS:

Please note that all Covid-19 safety processes and procedures will continue to apply for 2022.

In order to limit contact between learners, each learner is to please have their own surface spray/sanitizer in a bag, that must be used by the learner only.

Parents/Guardians are to please complete the daily screening tool .

Learners must wear masks and limit contact with other learners.

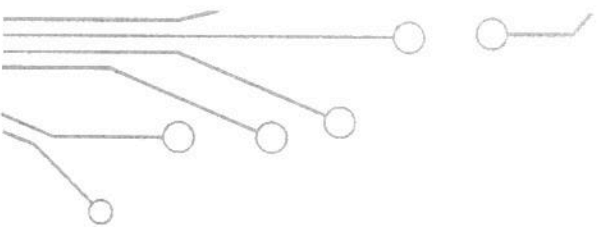


PROTOCOL TO FOLLOW WHEN LEARNERS FALL ILL AT SCHOOL:

Learners who present with any COVID-19 symptoms will be isolated in the isolation room in Hofmeyer Avenue.

Parents will be contacted to fetch the learner from this isolation room. Parents are to wear masks and not exit their vehicle. A staff member will escort the learner to the parent.

If a learner presents with any symptoms on the screening tool, we request that the learner be kept at home for at least 2-3 days or until a doctor recommends it is safe to return.



GENERAL

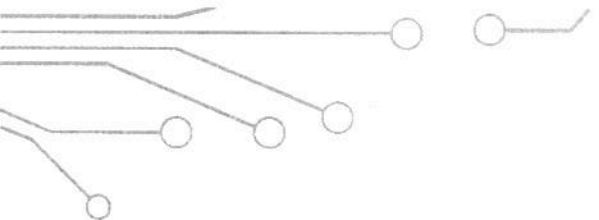
Transport and Road safety: Pedestrians must use the Pedestrian Crossing. Parents must not park on the pedestrian crossing or in front of the gates. Please set the correct example for your child. Cross at the Scholar Patrol. Parents/Guardians are to respect the Scholar Patrol.

Litter: Help us to keep the school and our community clean. Set the example.

Toilet: Please teach your child proper toilet usage and hygiene.

Reading: Children must read every day at home. A book must be in the learners bag to read daily. Please encourage reading. If your child is not a member of a Public Library, it is not too late to enrol him/her.

Online time:
Please monitor content ,time spent and necessity.



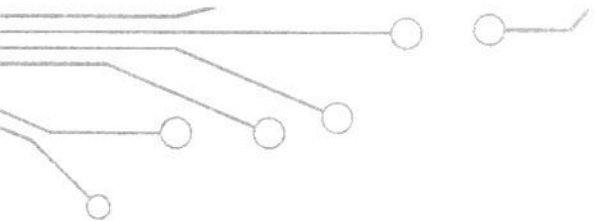
CRITERIA FOR PROMOTION FOUNDATION PHASE

50% in English

40% in Afrikaans

40% in Mathematics

40% in Life Skills



IMPORTANCE OF HOMEWORK

- No formal assessments will be completed at home
- Creative Arts: No product – No mark!
- Adhere to time frames given for assignments/tasks
- Never complete assignments for your child – they need to acquire the skills of planning and organizing for themselves.

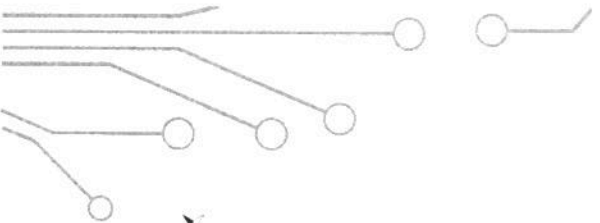
ASSESSMENT IN CAPS

CONSISTS OF:

- CONTINUOUS ASSESSMENT
- ✓ ASSESSMENT TASKS
- ✓ WRITING
- ✓ ORALS
- ✓ PRACTICAL TASKS
- ✓ READING ALOUD
- ✓ ORALS
- ✓ ROLE PLAY
- ✓ LISTENING ACTIVITIES

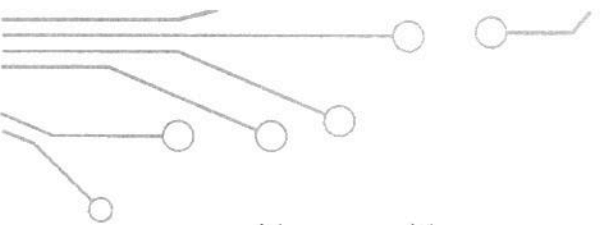
COMMUNICATION

- We need to be honest with one another at all times. Should something trouble you, your first step is always the class teacher. Please establish a relationship with the educators, approach them with your concerns, give them an opportunity to correct a situation or at least share their point of view or explanation of what happened. Our staff is professionally trained and you should not fear victimization of your child just because you expressed some dissatisfaction about something. Give the educator a fair chance. Should the problem remain, then report it to the Departmental Head (DH) and it can then also be escalated to the Deputy Principal or Principal if needed.
- If it is more serious, contact the Deputy Principal or the Principal.



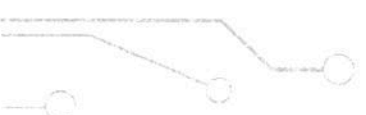
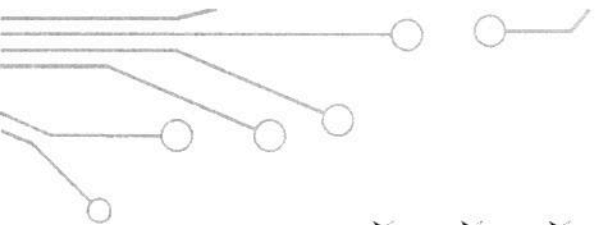
BULLYING.

- Parents do not take all quarrels amongst learners, fighting over something as bullying.
- All incidents reported to the teachers are investigated and we try to resolve these without involving you. Serious incidents are treated differently and we will involve you in such cases.
- Bullying is a continuous action of intimidating, threatening of one learner by someone else. These are seen as a serious matter and your child must report this to the class teacher so that the necessary steps and actions can be taken.
- All our learners have the right to feel safe and secure at school but we cannot act if we are not informed that your child is being bullied.
- Cyber bullying is also on the increase. Children should not bring cell phones to school. The office will contact you in case of emergencies.



GENERAL

- **Learners should get enough sleep.**
- **Start their day off with a healthy breakfast.**
- **Have healthy lunch packs and a water bottle.**
- **Use a strong school bag – protect books inside.**
- **Pack books necessary for the day.**
- **Display respectful behaviour.**



SCHOOL MANAGEMENT TEAM

ACTING PRINCIPAL

Mr L Jacob

DEPUTY PRINCIPAL

Mrs Z Mahlangu

ACTING DEPUTY PRINCIPAL

Mrs M Wiken

DEPT HEAD

Mrs BC Manicum

DEPT HEAD

Mrs C Schwartz

ACTING DEPT HEAD

Mrs N Nieuwoudt

SGB DEPT HEAD

Mrs N.Saal

ACTING DEPT HEAD

Mrs M Hermann

R/A Hetta Grobler
 R/B Lynn Fisher
 R/C Anisha Padayachy (GH)

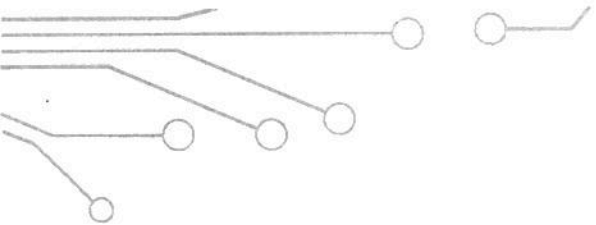
1/A Christa Coetzee - Fish
 1/B **May Hermann – Lions (Acting DH Grade 1 &2)**
 1/C Corlia Brits - Ladybug
 1/D Karina Swann – Rabbit (GH)
 1/E Deseré De Goede - Superhero

2/A Noreen Malim - Flower
 2/B Mubeena Gani - Unicorn
 2/C Janri Horn – Monster (GH)
 2/D Preshanta Ford – Dinosaurs

3/A **Chrystal Schwartz – Butterflies (DH Grade R & 3)**
 3/B Premilla Pillay - Rainbows
 3/C Carli Schoeman – Bees (GH)
 3/D Naomi Brookes – Puppies

Sithembinkosi November – PE Teacher

STAFF FOUNDATION PHASE



DH	Nathalie Saal	Afr – Grd. 4
4A	Trinolea Callan-Sanjith	Eng. – Grd.4
4B	Zanele Mahlangu (GH)	LS – Grd.4
		NS & T – Grd.4
4C	Mandisa Jolinyathi	SS – Grd.6
		SS – Grd.5
		SS – Grd.4
4D	Desiré Grobbelaar	Maths – Grd.4
DH	Bronwin Manicum	Eng. – Grd.7
5A	Anrie Coetzer (GH)	Afr. – Grd.5
		SS – Grd.4
5B	Zakithi Machaka	Eng. – Grd.5
5C	Marna Geldenhuis	Maths- Grd.5
5D	Karabo Rabotho	LS – Grd.5
		SS – Grd.5
	Helena Aitken	NS & T – Grd.5
		Afr. – Grd.6
Dep	Mrs Mahlangu	SS – Grd.7

STAFF INTERSEN PHASE



6A Pontsho Maleka (GH)

LS – Grd.6

NS & T – Grd.4

6B Elani Venter

Maths – Grd.6

6C Sarah-Jane Smith

NS & T – Grd.5

NS & T – Grd.6

6D Simeshni Chetty

Eng – Grd.6

Act. DH Natasha Nieuwoudt

Maths – Grd.7

7A Thys Botha

Afr. – Grd.7

Tech – Grd.7

7B Proud Mnguni

Eng. – Grd.7

EMS – Grd.7

7C

Marlize Verwey (GH)

LO – Grd.7

NS – Grd.7

SS – Grd.7

7D

Anna-Belle Lawrence

Eng. – Grd.7

CA – Grd.7

EMS – Grd.7

Acting Deputy M. Wilken

SS – Grd.4

Acting Principal L. Jacob

Tech – Grd.7

**May 2022 be a special and very successful
journey for all of us, where we work
together in the best interest of our children.**

